

Potential Human Health Effects

Prolonged exposure to water containing high levels of blue green algae, through body contact, ingestion or inhalation, can result in health issues that include:

- Rashes
- Eye, nose, mouth, or throat irritation
- Allergic reactions
- Headache
- Gastrointestinal upset, including abdominal pain, nausea, vomiting, and diarrhea
- Liver damage
- Neurological reactions, such as tingling in fingers and toes

IF YOU ARE SHOWING SYMPTOMS, CONTACT YOUR DOCTOR OR ONE OF THE HEALTH AGENCIES BELOW.

Report Bloom-Related Symptoms to:

Ontario County Public Health Department
(585) 396-4343
Mary Beer: mary.beer@co.ontario.ny.us

NYS Department of Health
harmfulalgae@health.ny.gov

Potential Animal Health Effects

Symptoms of toxin exposure in animals can include vomiting, diarrhea, shallow or labored breathing and seizures. Contact your veterinarian immediately if your animal is showing symptoms.

This document was prepared for the New York State Department of State with funds provided under Title 11 of the Environmental Protection Fund.

If You Suspect It, Report It

Collect Helpful Information on Blooms

- Location
- Photos
- Description - Was it streaky, gloppy, threadlike, like spilled paint, like pea soup, scummy, silky, or have small leaves? What color was it?
- How large of an area did it cover?
- How long was it there?

Report Suspected Blooms To:

Canandaigua Lake Watershed Program

(585) 396-3630 or (585) 396- 9716
Kevin.Olvany@canandaiguanewyork.gov
KMcGarry@canandaiguanewyork.gov
George.Barden@ontswcd.com

NYS Department of Environmental Conservation

(518) 402-8179
www.dec.ny.gov/chemical/77118.html

For More Information on Harmful Algae Blooms

NYS Department of Environmental Conservation

<http://www.dec.ny.gov/chemical/77118.html>

NYS Department of Health

<https://www.health.ny.gov/harmfulalgae/>

Canandaigua Lake Watershed Council

<http://canandaigualake.org/watershed/>

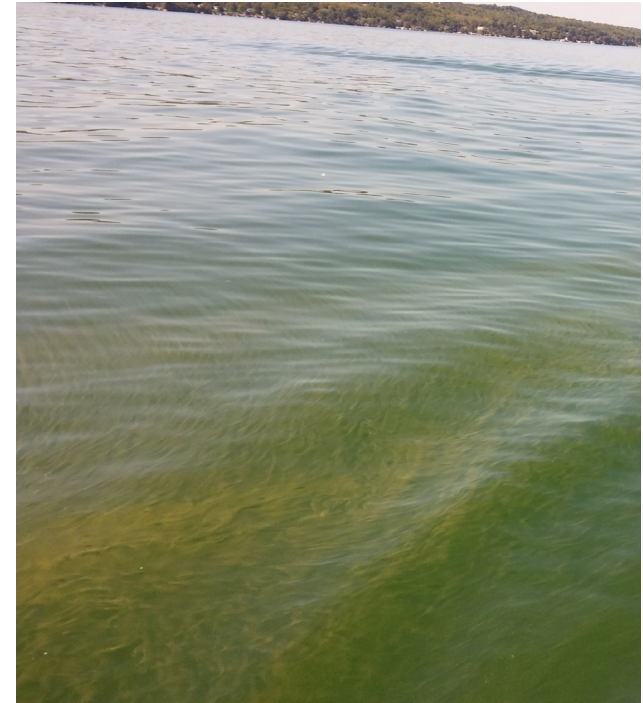
Canandaigua Lake Watershed Association

<http://www.canandaigualakeassoc.org/>

Sign up to receive CLWA E-Notifications by emailing info@canandaigualakeassoc.org

Harmful Algae Blooms

Your Guide if Another Bloom Occurs on Canandaigua Lake



Typical bloom conditions on the lake, Sept 2015

Canandaigua Lake and Harmful Algae Blooms

Canandaigua Lake has excellent water quality and is an invaluable drinking water and recreational resource. In 2015, a combination of factors led to the first recorded harmful algae bloom on the lake. Harmful algae blooms are caused by certain species of blue green algae (technically called cyanobacteria) that are capable of producing toxins. This brochure includes common sense tips and resources if another bloom occurs.

Identifying Harmful Algae Blooms

Use visual cues to identify harmful algae blooms. They can appear like pea soup, spilled paint, globs, and parallel streaks. The color is typically blue-green to green to yellow, but can also be brown, red or purple.

Blooms can move and appear quickly in the lake. No map can accurately show bloom locations at any given moment.



**STAY SAFE
AVOID BLOOMS!**

What to Do During a Harmful Algae Bloom:

AVOID SKIN CONTACT, INGESTION, AND INHALATION



Do not swim, wade, or fish in a suspected bloom area. Avoid water skiing, jet skiing, or tubing in a suspected bloom areas, as it can lead to both body contact and inhalation of

blue green algae droplets. If you come into contact with a bloom, rinse off your skin with clean water and contact your doctor if you show symptoms.

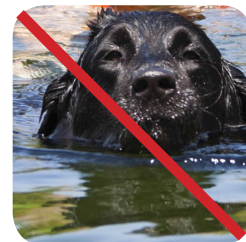


Do not use PRIVATE water drawn from the lake during a bloom. Boiling, freezing and in-home treatment systems do not remove blue green algae or toxins. Public water

supplies have multiple safeguards and can be utilized during a bloom unless you are otherwise notified.



NYS DOH recommends avoiding eating any fish caught within a bloom area. Contact NYS DOH for more information.



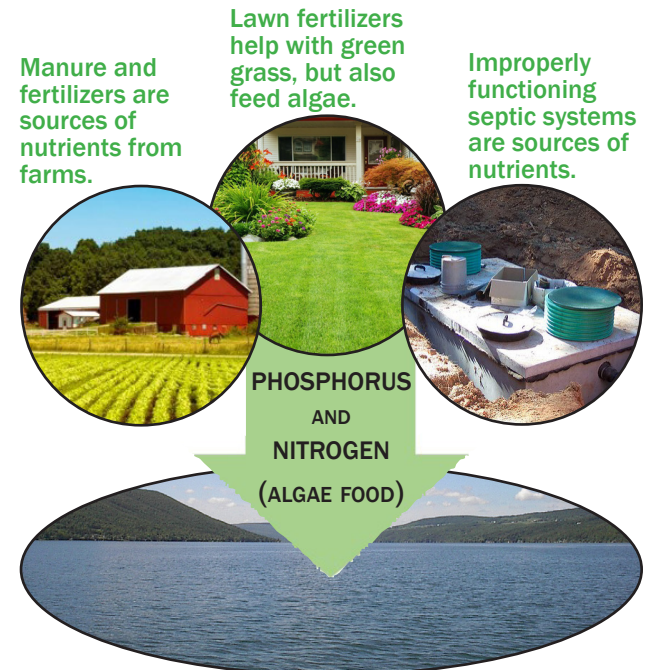
Keep pets and livestock out of bloom areas. Their fur concentrates algae, so they can ingest a large dose of toxins when they groom themselves.

Blooms Start Upstream

Low levels of blue green algae have naturally been present in the lake for centuries. A combination of factors allow the algae to grow into harmful algae blooms and degrade our water quality. Phosphorus and nitrogen inputs (nutrients) from the surrounding watershed feed the algae. Hot, sunny, and calm weather creates ideal algae growing conditions. Zebra and quagga mussels don't filter blue green algae out of the water.

Canandaigua Lake is very sensitive to small nutrient increases. Nutrients originate in the watershed and have many sources. Reducing nutrients from the watershed is the only strategy we have to prevent another bloom.

REDUCE Nutrients Blooms



Visit <http://canandaigualake.org/watershed/> and <http://www.canandaigualakeassoc.org/> to learn how to reduce nutrient pollution.